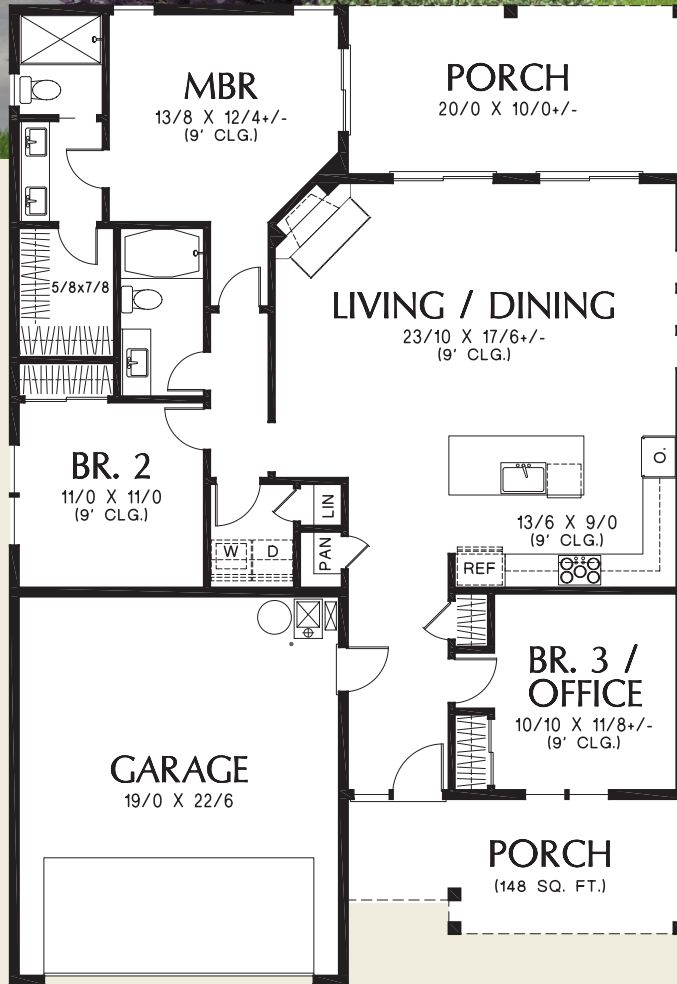




# Mascord

ALAN MASCORD DESIGN ASSOCIATES, INC.

## The Moorpoint 1132EA



**Total Area** 1446 Sq. Ft

**Width** 40'-0" **Depth** 58'-0"

**Height** (Main Flr to Peak): 23'-1"  
(to Midpt of Roof): 16'-0"



ALAN MASCORD DESIGN ASSOCIATES, INC  
2187 NW Reed St, Suite 100, Portland, OR 97210 · 503.225.9161

[www.mascord.com](http://www.mascord.com)

Copyright © 2022 Alan Mascord Design Associates, Inc.  
All rights reserved.