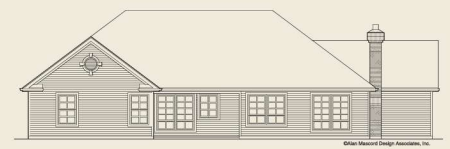
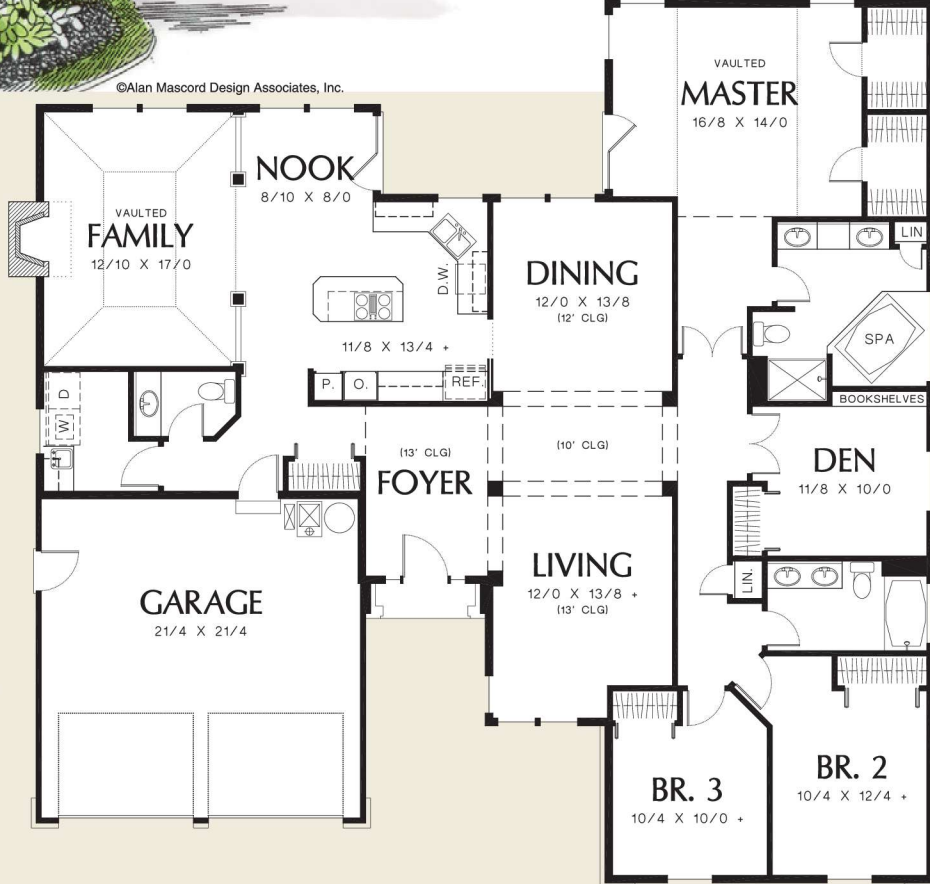




©Alan Mascord Design Associates, Inc.

©Alan Mascord Design Associates, Inc.



Total Area	2378 Sq. Ft
Width	Depth
60'-0"	59'-0"
Height	(Main Flr to Peak): 21'-6"
	(to Midpt of Roof): 15'-9"



ALAN MASCORD DESIGN ASSOCIATES, INC
2187 NW Reed St, Suite 100, Portland, OR 97210 · 503.225.9161
mascord.com | houseplans.co