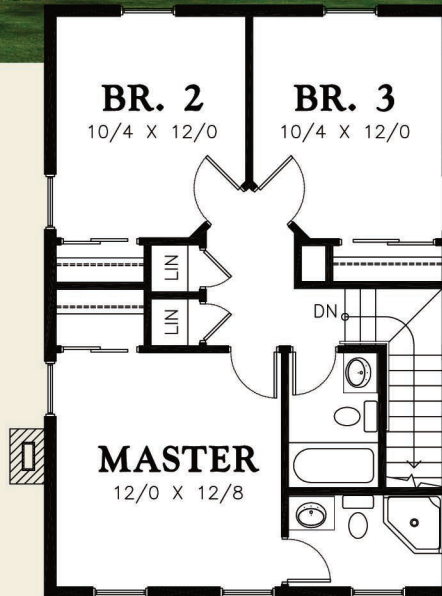
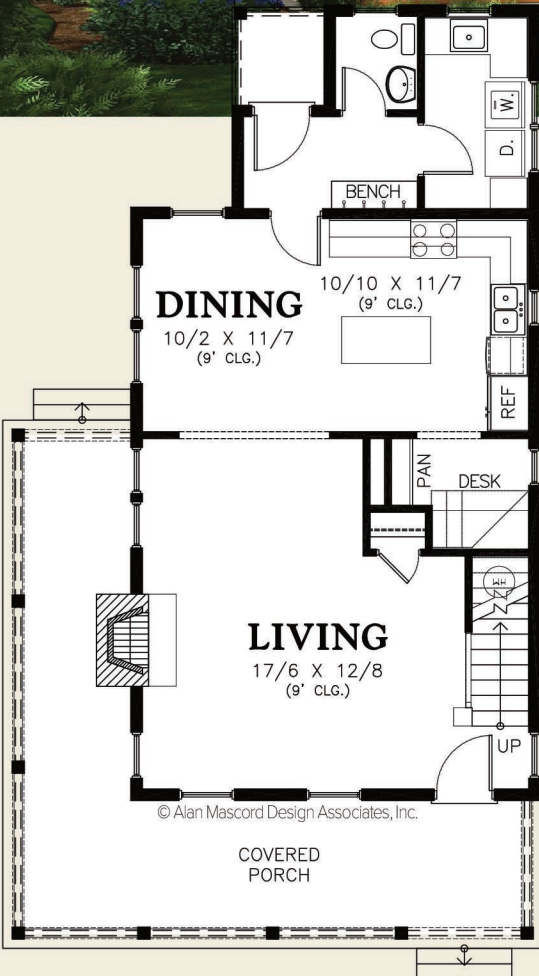




Mascord
ALAN MASCORD DESIGN ASSOCIATES, INC.

The Mallory
21118



Upper Floor	658 Sq. Ft
Main Floor	858 Sq. Ft
Total Area	1516 Sq. Ft
Width	Depth
28'-4"	50'-6"
Height (Main Flr to Peak): 27'-10"	
(to Midpt of Roof): 22'-10"	



ALAN MASCORD DESIGN ASSOCIATES, INC
2187 NW Reed St, Suite 100, Portland, OR 97210 · 503.225.9161
mascord.com | houseplans.co