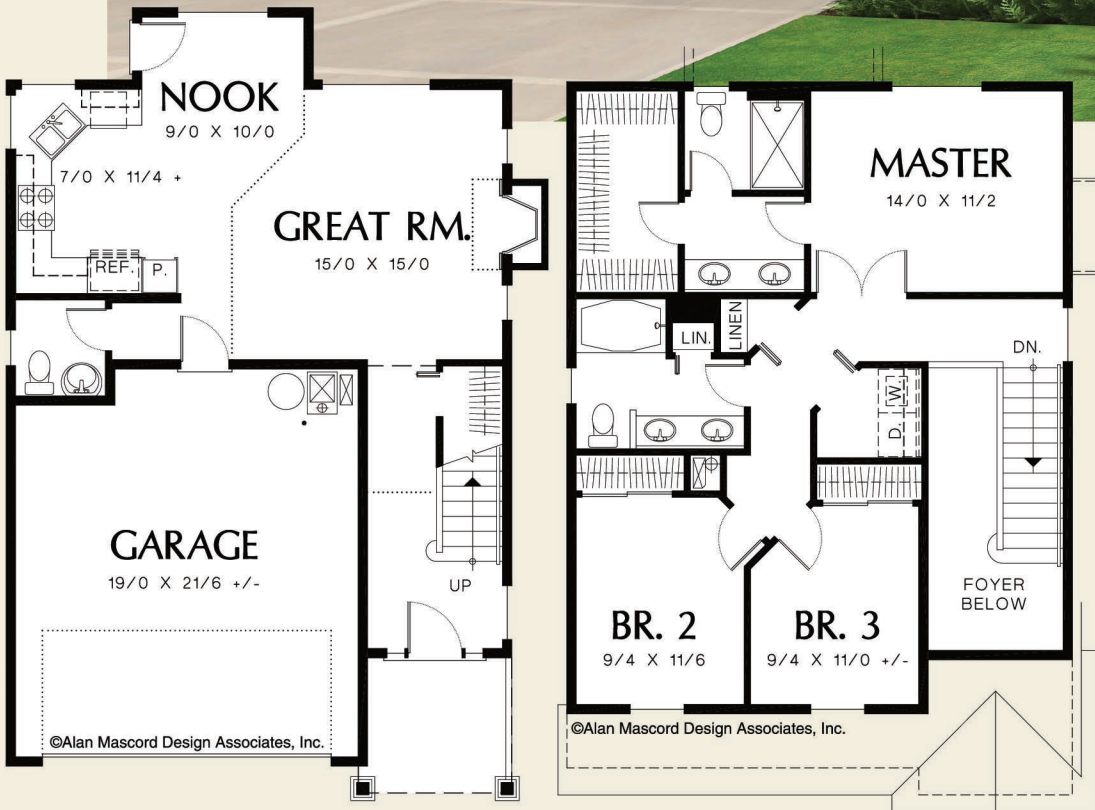




©Alan Mascord Design Associates, Inc.



©Alan Mascord Design Associates, Inc.

©Alan Mascord Design Associates, Inc.



Upper Floor	830 Sq. Ft
Main Floor	636 Sq. Ft
Total Area	1466 Sq. Ft
Width	Depth
28'-0"	43'-6"
Height	(Main Flr to Peak): 26'-0"
	(to Midpt of Roof): 21'-6"



ALAN MASCORD DESIGN ASSOCIATES, INC
2187 NW Reed St, Suite 100, Portland, OR 97210 · 503.225.9161
mascord.com | houseplans.co