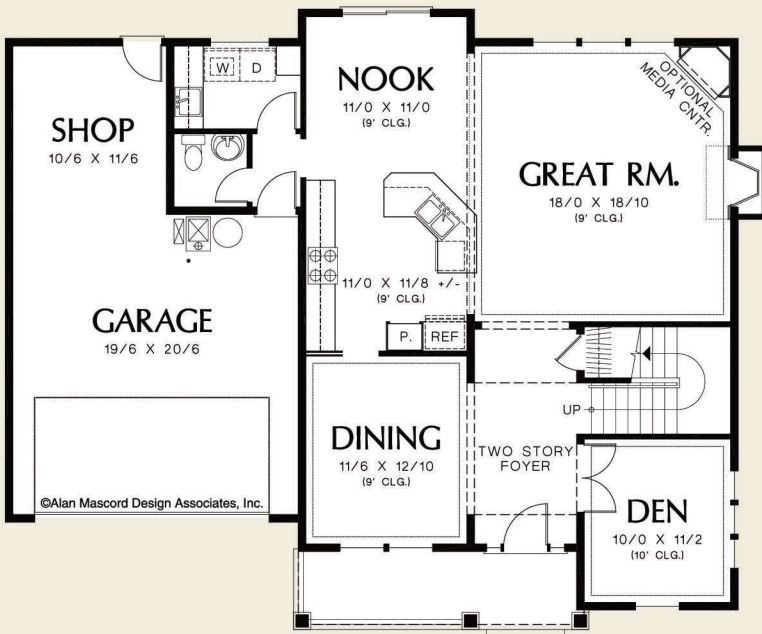




©Alan Mascord Design Associates, Inc.



Upper Floor	1392 Sq. Ft
Main Floor	1226 Sq. Ft
Total Area	2618 Sq. Ft
Width	Depth
50'-0"	42'-0"
Height	(Main Flr to Peak): 30'-0"
	(to Midpt of Roof): 24'-7"



ALAN MASCORD DESIGN ASSOCIATES, INC
2187 NW Reed St, Suite 100, Portland, OR 97210 · 503.225.9161
mascord.com | houseplans.co