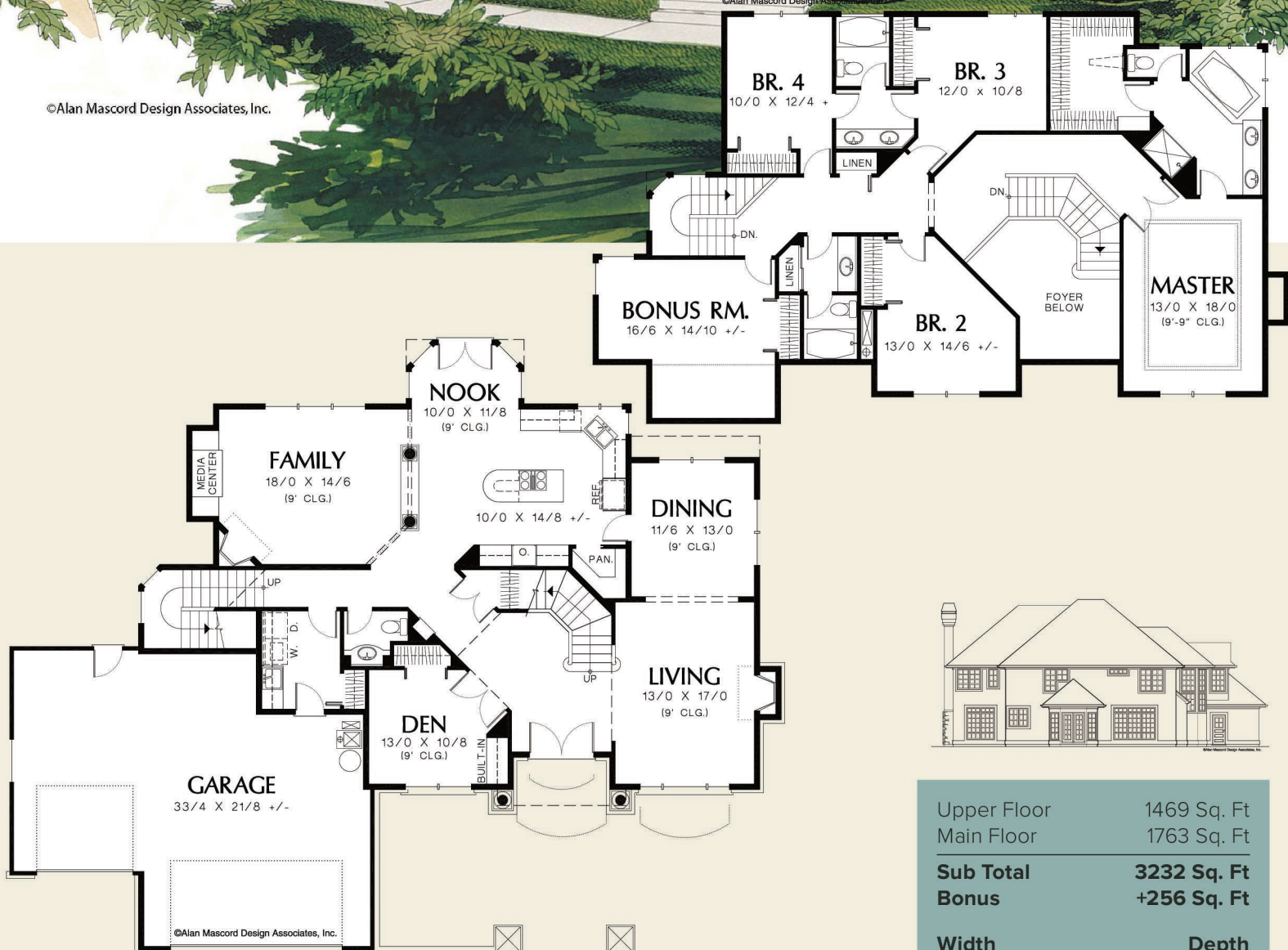


©Alan Mascord Design Associates, Inc.



©Alan Mascord Design Associates, Inc.



Upper Floor	1469 Sq. Ft
Main Floor	1763 Sq. Ft
Sub Total	3232 Sq. Ft
Bonus	+256 Sq. Ft
Width	Depth
70'-0"	57'-0"
Height	(Main Flr to Peak): 32'-8"
	(to Midpt of Roof): 25'-2"



ALAN MASCORD DESIGN ASSOCIATES, INC
2187 NW Reed St, Suite 100, Portland, OR 97210 · 503.225.9161
mascord.com | houseplans.co