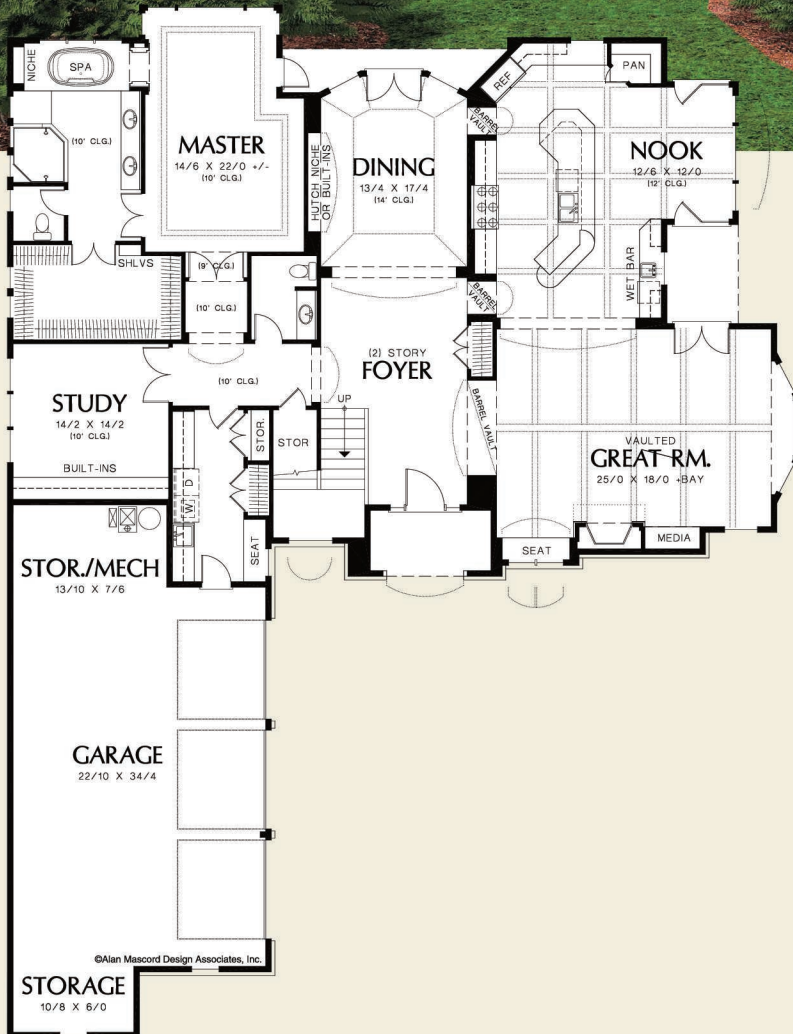




©Alan Mascord Design Associates, Inc.



Upper Floor	1079 Sq. Ft
Main Floor	3003 Sq. Ft
Sub Total	4082 Sq. Ft
Bonus	+812 Sq. Ft
Width	Depth
72'-0"	94'-0"
Height	(Main Flr to Peak): 33'-2"
	(to Midpt of Roof): 26'-5"



ALAN MASCORD DESIGN ASSOCIATES, INC
2187 NW Reed St, Suite 100, Portland, OR 97210 · 503.225.9161

mascord.com | houseplans.co