



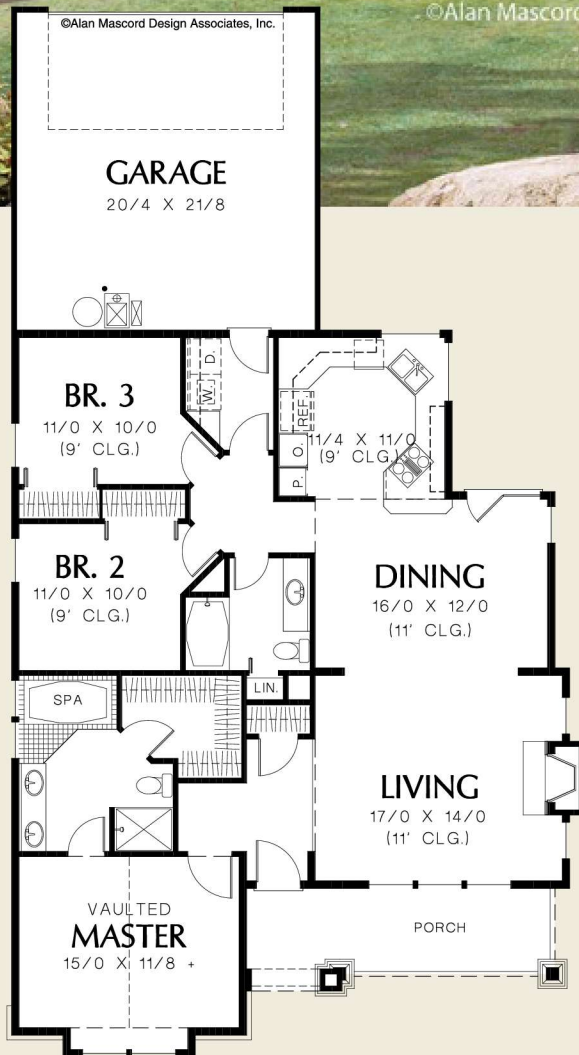
# Mascord

ALAN MASCORD DESIGN ASSOCIATES, INC.

## The Brogan 1101



©Alan Mascord Design Associates, Inc.



**Total Area** 1520 Sq. Ft

**Width** 38'-0"  
**Depth** 72'-0"

**Height** (Main Flr to Peak): 20'-11"  
(to Midpt of Roof): 15'-11"



ALAN MASCORD DESIGN ASSOCIATES, INC.  
2187 NW Reed St, Suite 100, Portland, OR 97210 · 503.225.9161

[mascord.com](http://mascord.com) | [houseplans.co](http://houseplans.co)