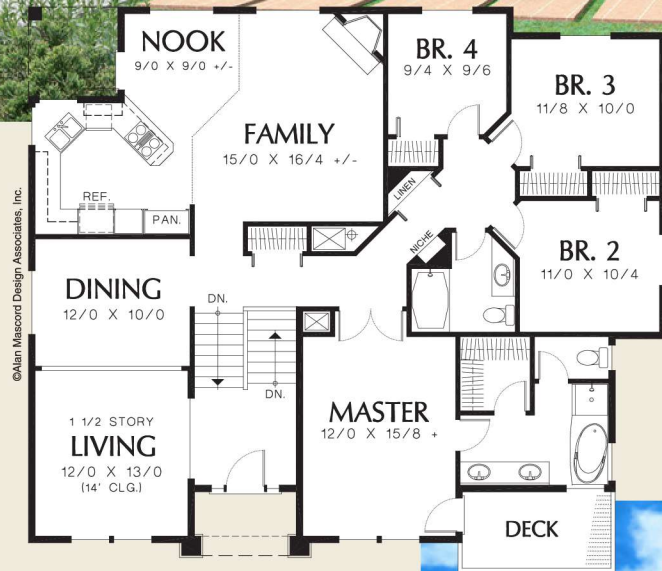
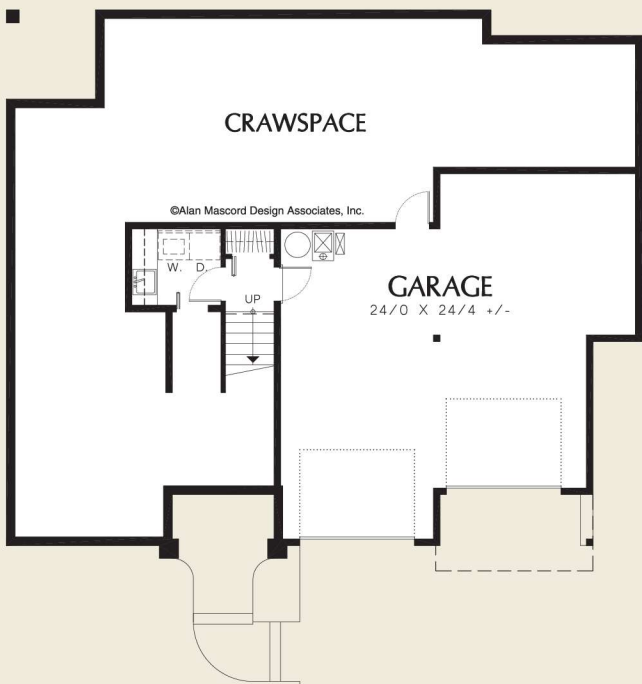




Mascord

ALAN MASCORD DESIGN ASSOCIATES, INC.

The Gresham 1109A



Total Area 1963 Sq. Ft

Width 50'-0"
Depth 43'-0"

Height (Main Flr to Peak): 34'-0"
(to Midpt of Roof): 26'-6"

Plan Designed for Sloping Lots



ALAN MASCORD DESIGN ASSOCIATES, INC
2187 NW Reed St, Suite 100, Portland, OR 97210 · 503.225.9161

mascord.com | houseplans.co