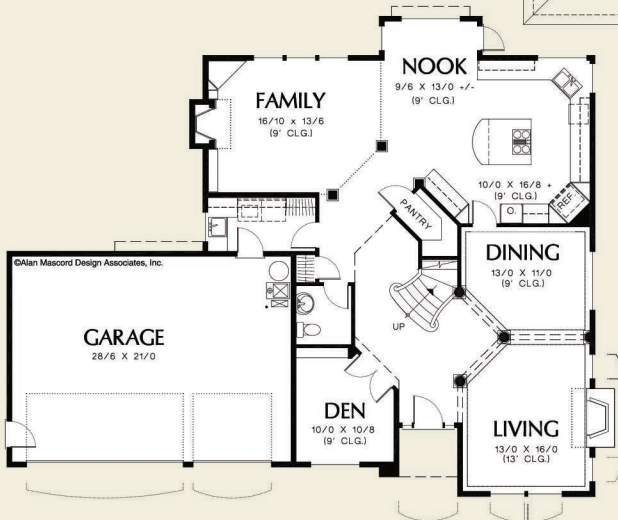
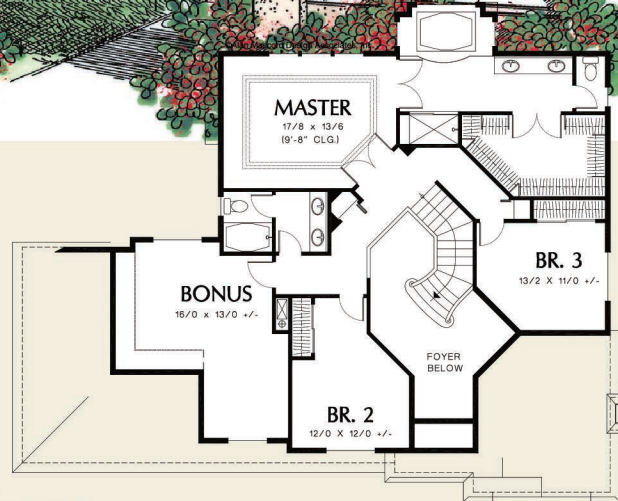




The Huxley 22111

©Alan Mascord Design Associates, Inc.



© Alan Mascord Design Associates, Inc.

Upper Floor	1160 Sq. Ft
Main Floor	1547 Sq. Ft
Sub Total	2707 Sq. Ft
Bonus	+288 Sq. Ft

Width	Depth
60'-0"	50'-0"

Height (Main Flr to Peak): 32'-10"
(to Midpt of Roof): 25'-4"



ALAN MASCORD DESIGN ASSOCIATES, INC
2187 NW Reed St, Suite 100, Portland, OR 97210 · 503.225.9161

mascord.com | houseplans.co