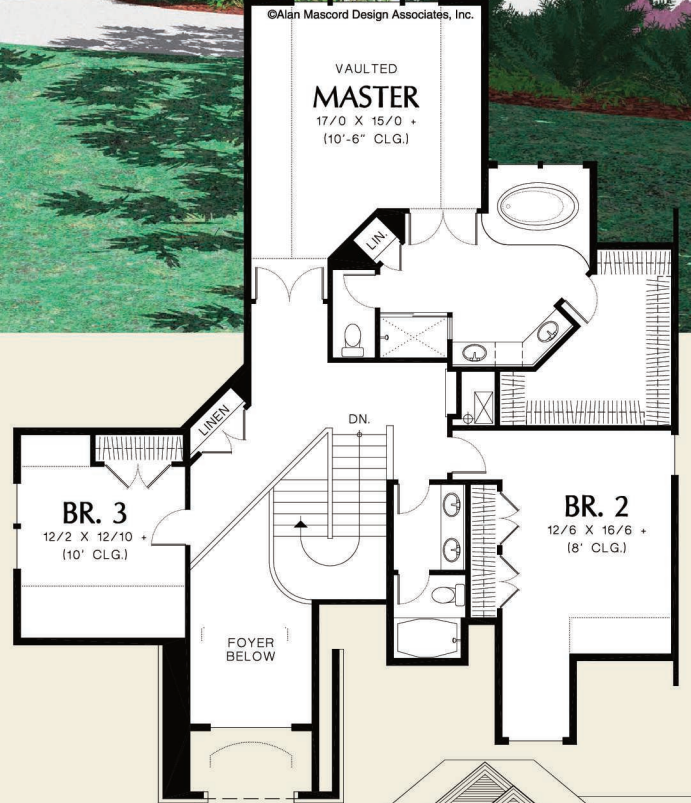
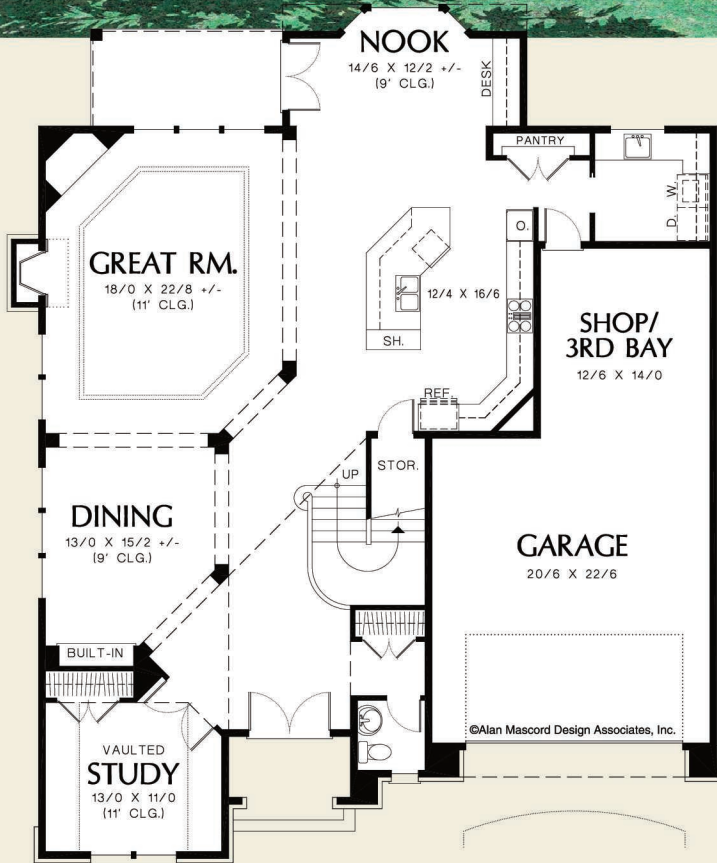




©Alan Mascord Design Associates, Inc.



Upper Floor	1490 Sq. Ft
Main Floor	1892 Sq. Ft
Total Area	3382 Sq. Ft
Width	Depth
50'-0"	63'-0"
Height (Main Flr to Peak): 29'-10"	
(to Midpt of Roof): 23'-11"	



ALAN MASCORD DESIGN ASSOCIATES, INC
2187 NW Reed St, Suite 100, Portland, OR 97210 · 503.225.9161

mascord.com | houseplans.co