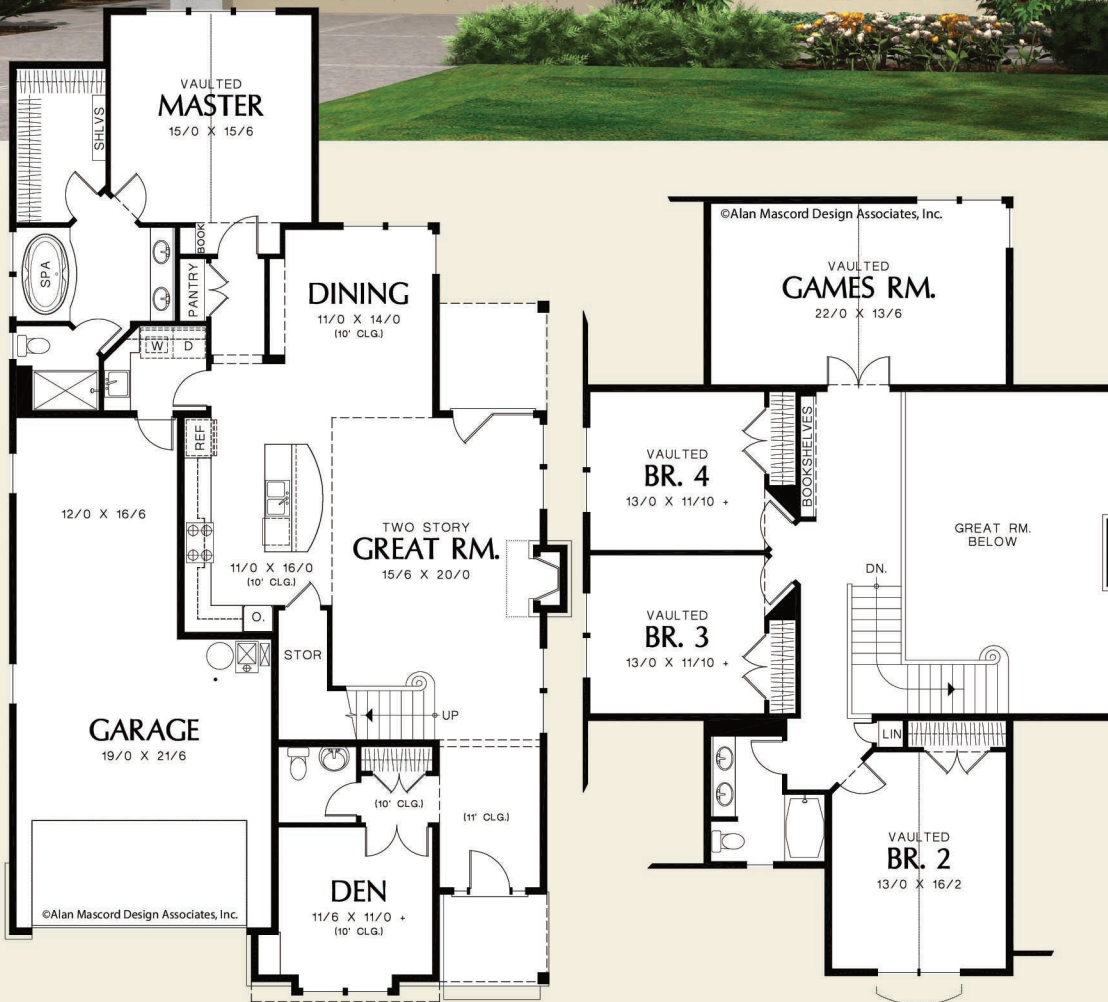




©Alan Mascord Design Associates, Inc.



©Alan Mascord Design Associates, Inc.



Upper Floor	1257 Sq. Ft
Main Floor	1747 Sq. Ft
Total Area	3004 Sq. Ft
Width	40'-0"
Depth	74'-0"
Height	(Main Flr to Peak): 31'-0" (to Midpt of Roof): 24'-9"



ALAN MASCORD DESIGN ASSOCIATES, INC
2187 NW Reed St, Suite 100, Portland, OR 97210 · 503.225.9161

mascord.com | houseplans.co