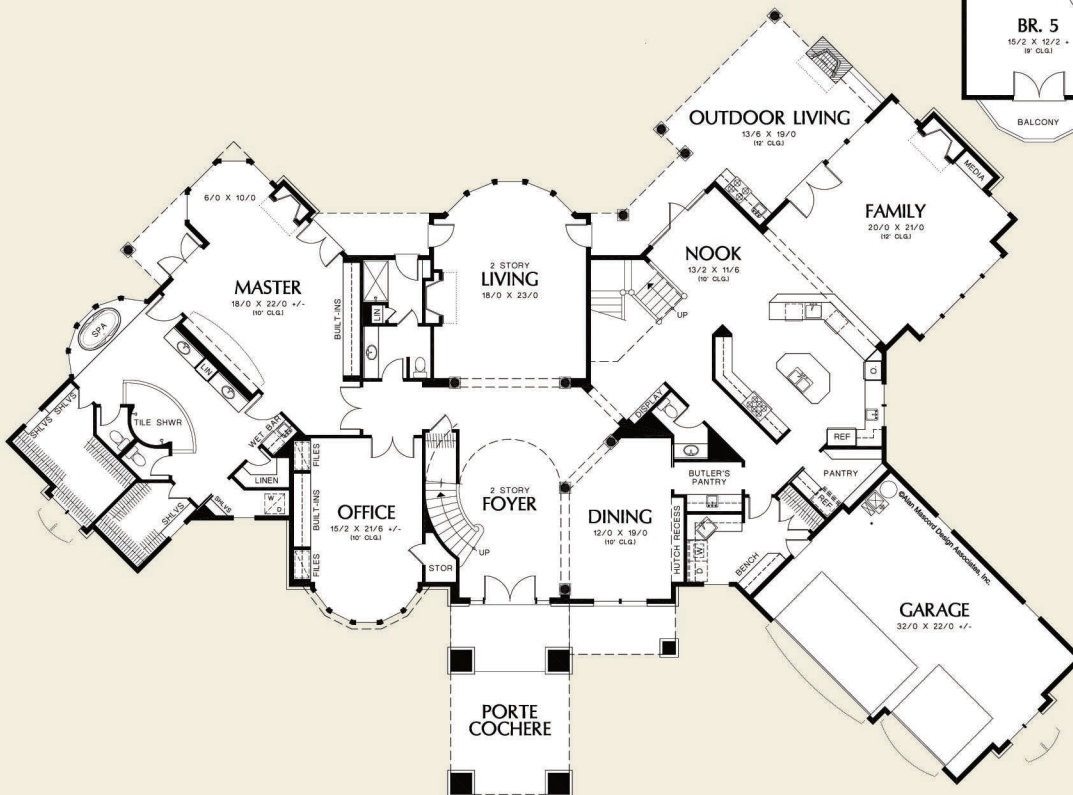




©Alan Mascord Design Associates, Inc.



Upper Floor	2093 Sq. Ft
Main Floor	4404 Sq. Ft
Total Area	6497 Sq. Ft
Width	Depth
127'-0"	92'-2"
Height	(Main Flr to Peak): 36'-9"
	(to Midpt of Roof): 28'-2"



ALAN MASCORD DESIGN ASSOCIATES, INC
2187 NW Reed St, Suite 100, Portland, OR 97210 · 503.225.9161

mascord.com | houseplans.co