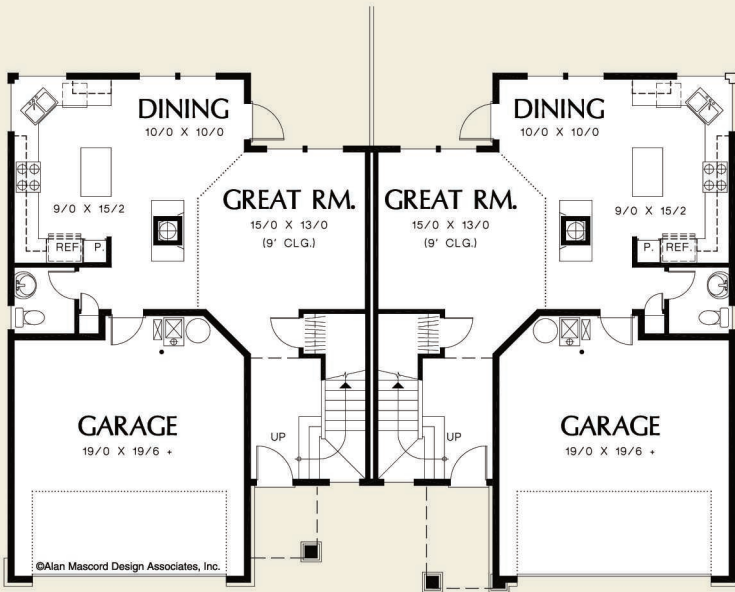
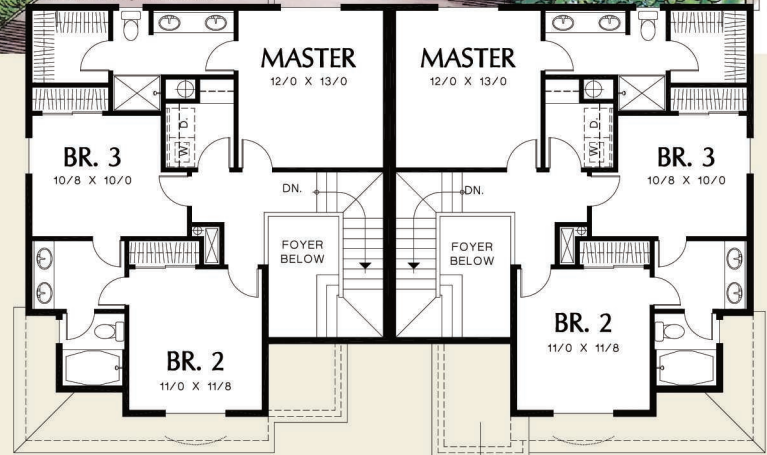




©Alan Mascord Design Associates, Inc.



Upper Floor	801 Sq. Ft
Main Floor	709 Sq. Ft
Total Area	1510 Sq. Ft
Width	Depth
30'-0"	42'-0"
Height	(Main Flr to Peak): 29'-7"
	(to Midpt of Roof): 23'-10"



ALAN MASCORD DESIGN ASSOCIATES, INC
2187 NW Reed St, Suite 100, Portland, OR 97210 · 503.225.9161
mascord.com | houseplans.co