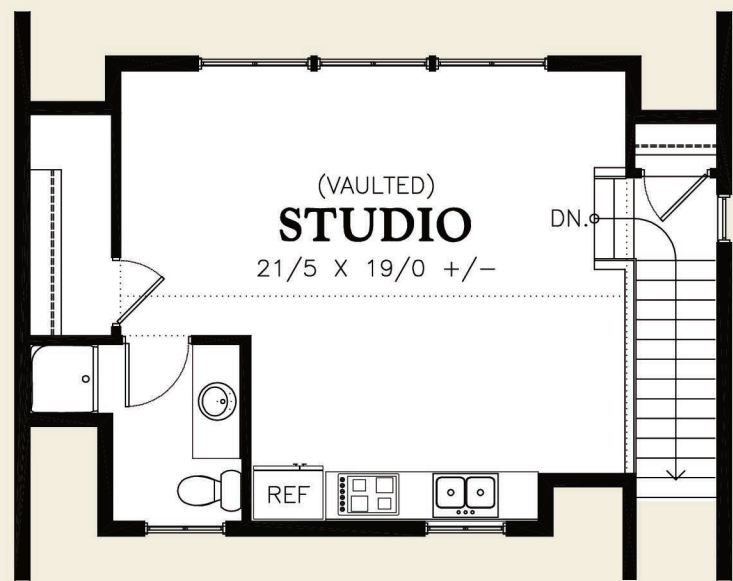
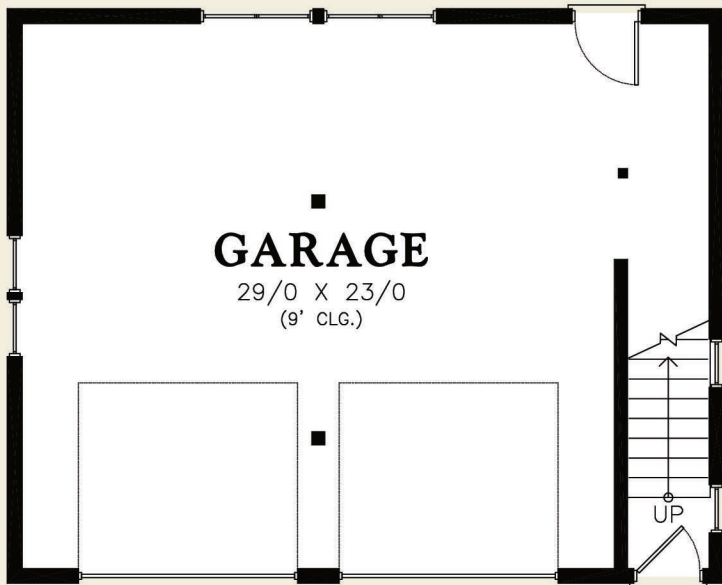




Mascord

ALAN MASCORD DESIGN ASSOCIATES, INC.

Garage Plan 5031



Upper Floor 495 Sq. Ft

Total Area 495 Sq. Ft

Width 30'-0" **Depth 24'-0"**

Height (Main Flr to Peak): 22'-10"



ALAN MASCORD DESIGN ASSOCIATES, INC
2187 NW Reed St, Suite 100, Portland, OR 97210 · 503.225.9161

mascord.com | houseplans.co