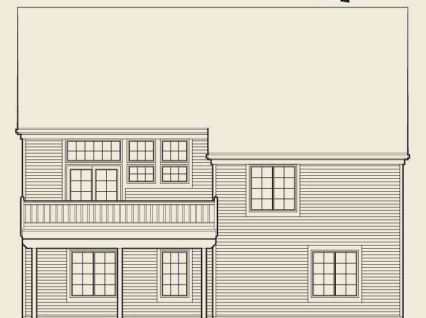
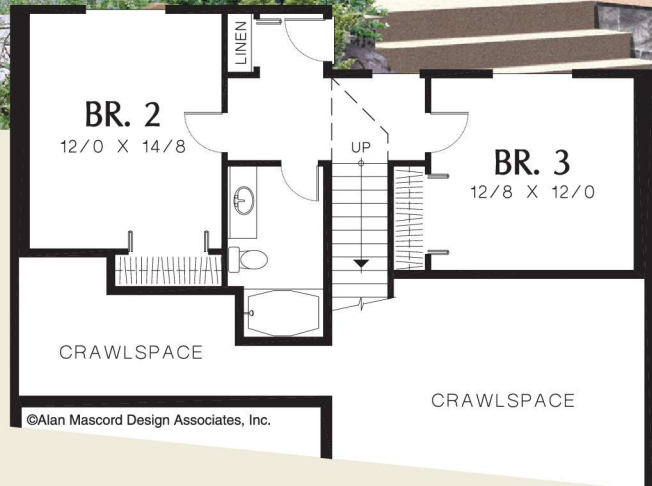




© Alan Mascord Design Associates, Inc.



**Total Area** 1740 Sq. Ft

**Width** 40'-0"  
**Depth** 47'-0"

**Height** (Main Flr to Peak): 23'-4"  
(to Midpt of Roof): 17'-0"

Plan Designed for Sloping Lots



**ALAN MASCORD DESIGN ASSOCIATES, INC**  
2187 NW Reed St, Suite 100, Portland, OR 97210 · 503.225.9161

[mascord.com](http://mascord.com) | [houseplans.co](http://houseplans.co)