

Price Category

Plan 1201

Alden



Main Floor	1644 Sq. Ft.
Lower Floor	1012 Sq. Ft.
Total Area	2656 Sq. Ft.

Width 52' Depth 55'
Height 25' Slab/Crawlspace

Plan designed for sloping lots.

ELEGANT FACADE, CENTRAL PLAN

Straightforward lines and elegant touches -- such as the multipane windows, trio of gables, and the copper roof above the bay window -- make this home a welcome addition to any neighborhood. On a walk-out lot, the daylight basement adds another level of living space, so this house can efficiently service a large and active family.

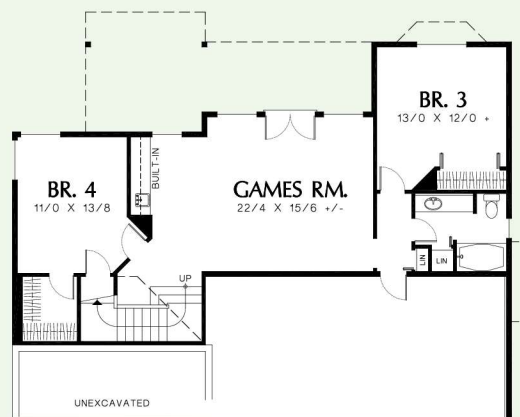
All rooms on the main level radiate from the great room, which lives up to its name. The tray ceiling rises to more than 10 feet. A focal-point fireplace is flanked by windows overlooking the rear deck. Access to the deck is through French doors in the kitchen, which includes a pantry and an island with a cooktop and sit-down snack counter. At the front of the house, the impressive dining room features a tall tray ceiling and floor-to-ceiling windows.

The spacious first-floor master suite is linked to the outdoors with a bay window and door to the deck. The well-appointed master bath is furnished with a whirlpool tub in a windowed alcove plus a shower.

With easy access from the foyer, the front bedroom also could function as a den or home office. It's served by an adjacent bath. Two more bedrooms and a bath are lodged downstairs. This level also houses a large game room with a built-in wet bar and doors to the back yard.



55' 52'



ALAN MASCORD DESIGN ASSOCIATES, INC.
1305 NW 18th Ave., Portland, OR 97209 ■ 503.225.9161 ■ fax 503.225.0933
www.mascord.com

© 1993 Alan Mascord Design Associates, Inc.
All rights reserved.