

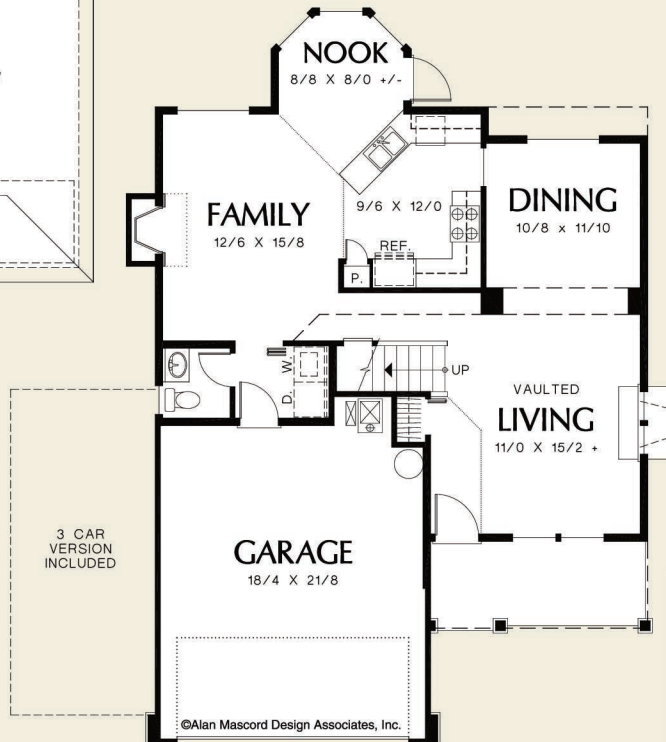


Mascord
ALAN MASCORD DESIGN ASSOCIATES, INC.

The Ashford
2146J



©Alan Mascord Design Associates, Inc.



©Alan Mascord Design Associates, Inc.



©Alan Mascord Design Associates, Inc.

Upper Floor	936 Sq. Ft
Main Floor	904 Sq. Ft
Total Area	1840 Sq. Ft

Width 34'-0" **Depth** 50'-10"

Height (Main Flr to Peak): 25'-8"
(to Midpt of Roof): 21'-2"



ALAN MASCORD DESIGN ASSOCIATES, INC
2187 NW Reed St, Suite 100, Portland, OR 97210 · 503.225.9161
mascord.com | houseplans.co