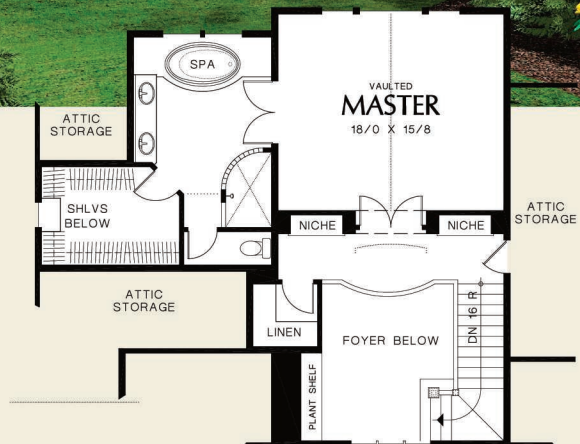




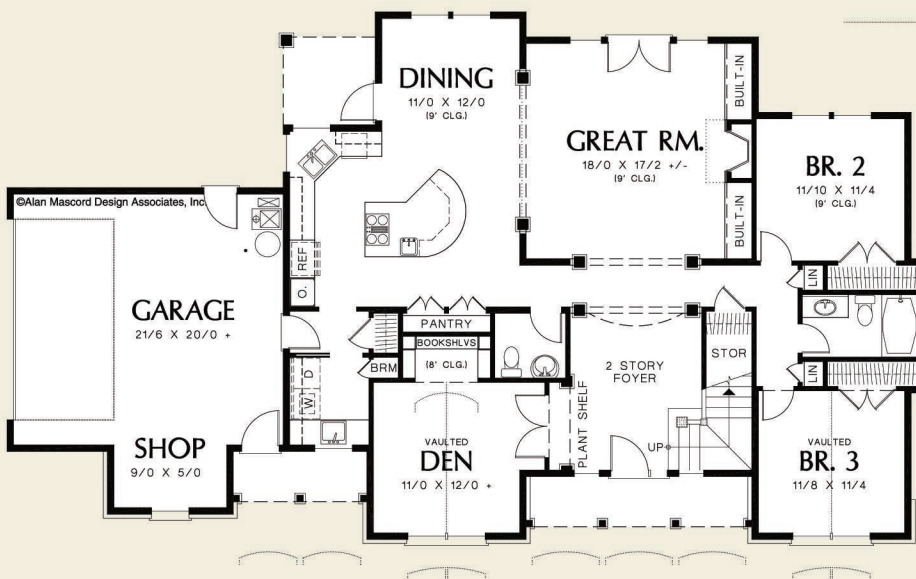
Mascord

ALAN MASCORD DESIGN ASSOCIATES, INC.

The Irvington
22116



©Alan Mascord Design Associates, Inc.



Upper Floor	743 Sq. Ft
Main Floor	1774 Sq. Ft
Total Area	2517 Sq. Ft
Width	Depth
73'-0"	42'-0"
Height	(Main Flr to Peak): 25'-9"
	(to Midpt of Roof): 21'-10"



ALAN MASCORD DESIGN ASSOCIATES, INC
2187 NW Reed St, Suite 100, Portland, OR 97210 · 503.225.9161

mascord.com | houseplans.co