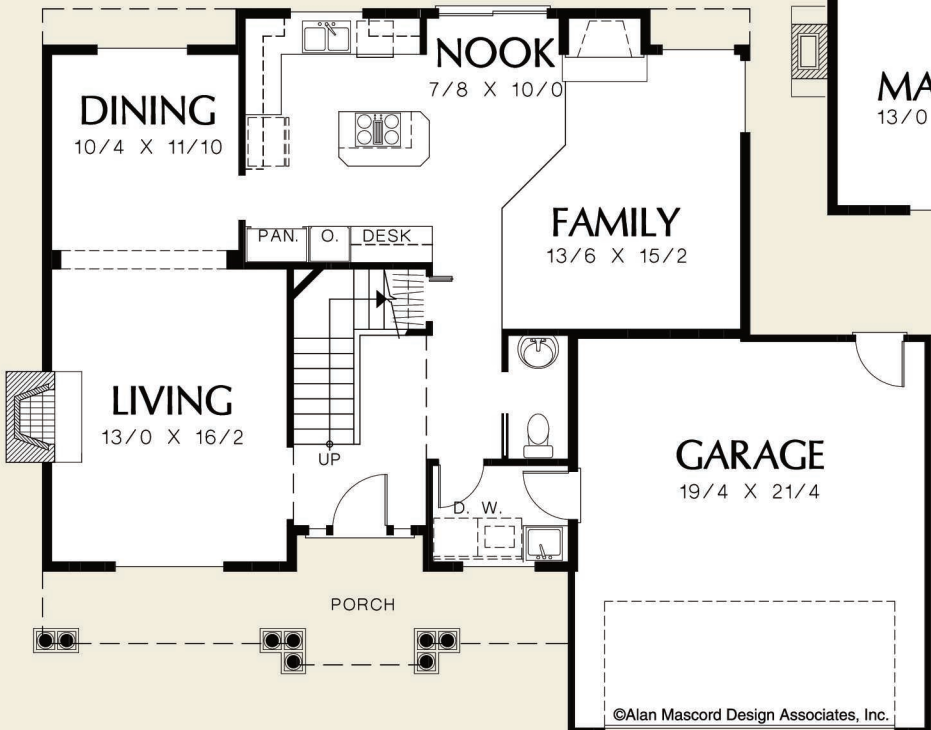
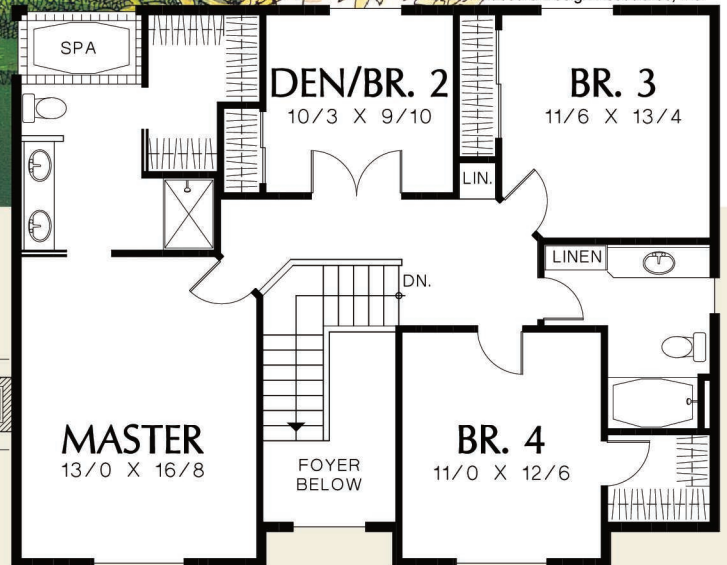


©Alan Mascord Design Associates, Inc.



©Alan Mascord Design Associates, Inc.

Upper Floor	1075 Sq. Ft
Main Floor	1032 Sq. Ft
Total Area	2107 Sq. Ft
Width	Depth
49'-0"	40'-0"
Height	(Main Flr to Peak): 26'-0"
	(to Midpt of Roof): 21'-6"



ALAN MASCORD DESIGN ASSOCIATES, INC
2187 NW Reed St, Suite 100, Portland, OR 97210 · 503.225.9161
mascord.com | houseplans.co