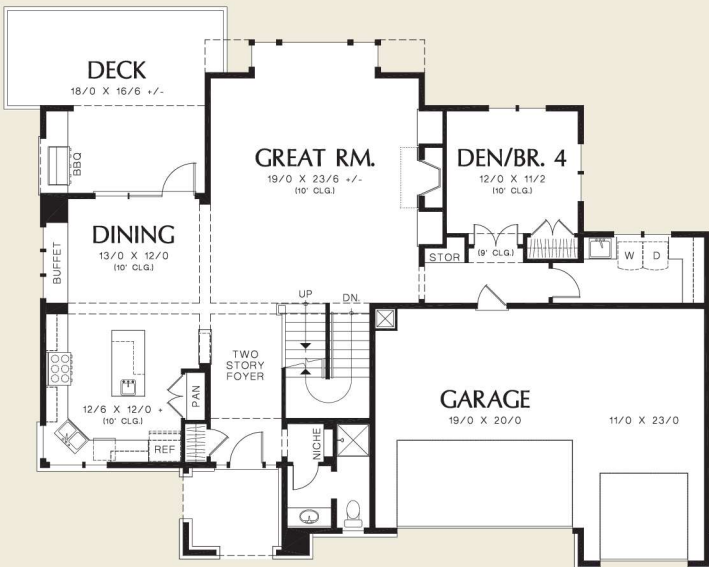




©Alan Mascord Design Associates, Inc.



Upper Floor	1367 Sq. Ft
Main Floor	1465 Sq. Ft
Lower Floor	1084 Sq. Ft
Total Area	3916 Sq. Ft

Width 61'-0"
Depth 48'-0"

Height (Main Flr to Peak): 25'-10"

Plan Designed for Sloping Lots



ALAN MASCORD DESIGN ASSOCIATES, INC
2187 NW Reed St, Suite 100, Portland, OR 97210 · 503.225.9161

mascord.com | houseplans.co