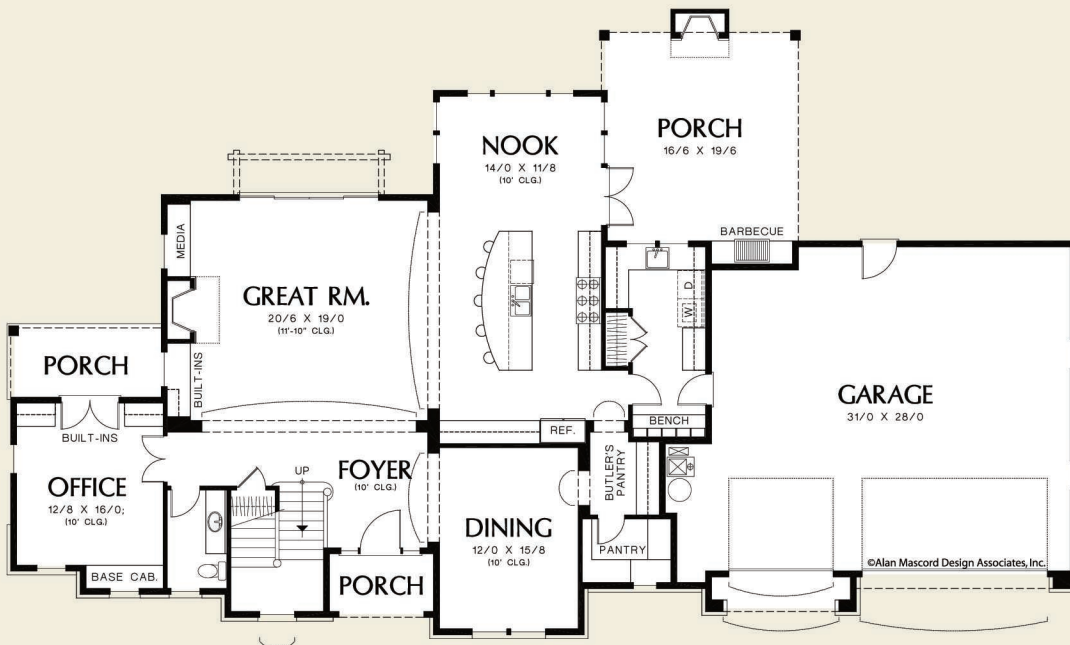




Mascord Design Associates, Inc.



Upper Floor	2362 Sq. Ft
Main Floor	1942 Sq. Ft
Total Area	4304 Sq. Ft
Width	92'-0"
Depth	47'-0"
Height	(Main Flr to Peak): 31'-8"
	(to Midpt of Roof): 25'-8"



ALAN MASCORD DESIGN ASSOCIATES, INC
2187 NW Reed St, Suite 100, Portland, OR 97210 · 503.225.9161

mascord.com | houseplans.co