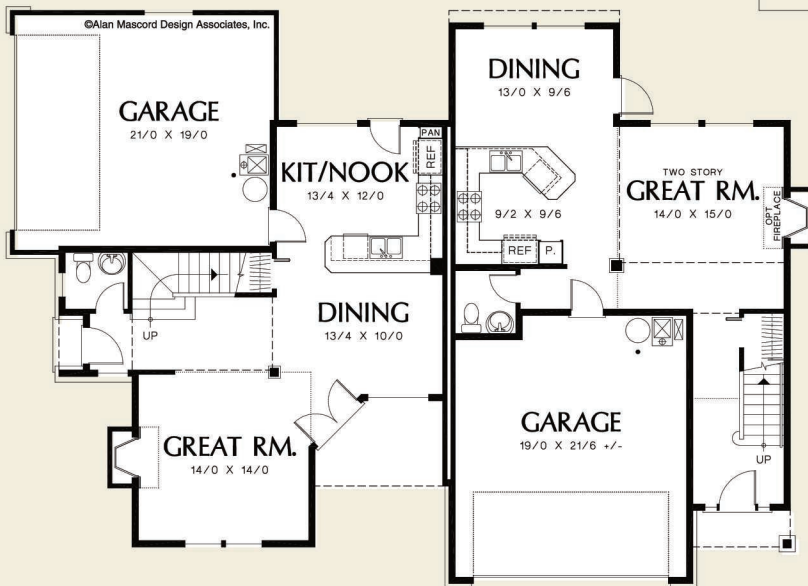




©Alan Mascord Design Associates, Inc.



A B



Unit A	
Upper Floor	711 Sq. Ft
Main Floor	723 Sq. Ft
Total Area	1434 Sq. Ft

Unit B	
Upper Floor	793 Sq. Ft
Main Floor	708 Sq. Ft
Total Area	1501 Sq. Ft

Width	Depth
64'-0"	47'-0"

Height	(Main Flr to Peak): 29'-1"
	(to Midpt of Roof): 23'-3"



ALAN MASCORD DESIGN ASSOCIATES, INC
2187 NW Reed St, Suite 100, Portland, OR 97210 · 503.225.9161

mascord.com | houseplans.co