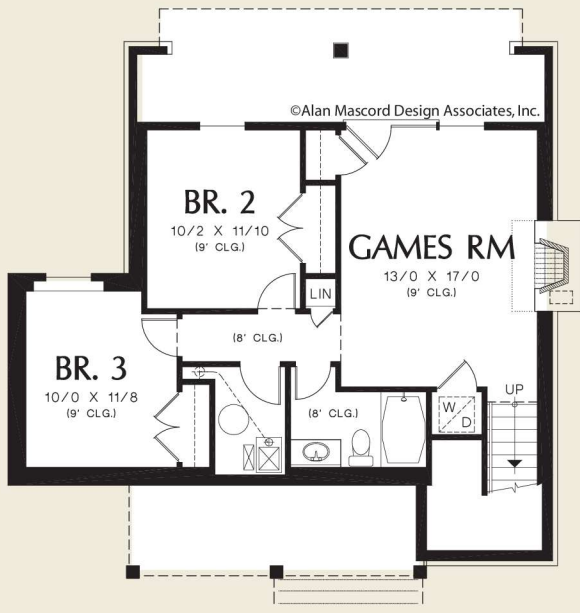
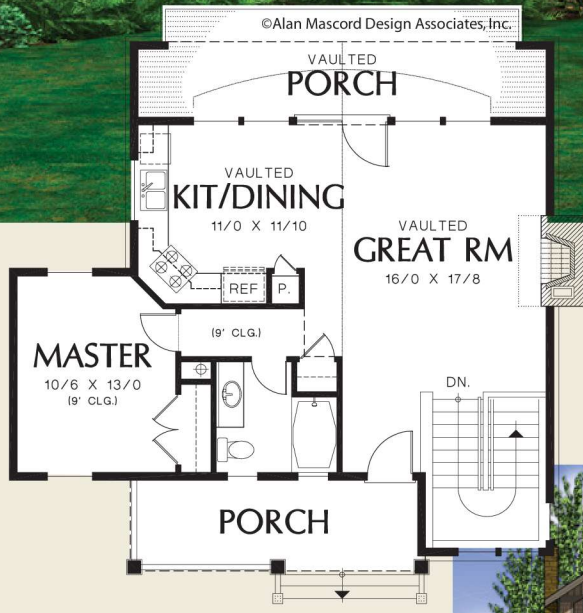




Associates, Inc.



Total Area	1395 Sq. Ft
Width 36'-0"	Depth 35'-0"
Height	(Main Flr to Peak): 19'-0" (to Midpt of Roof): 13'-10"
Plan Designed for Sloping Lots	



ALAN MASCORD DESIGN ASSOCIATES, INC
2187 NW Reed St, Suite 100, Portland, OR 97210 · 503.225.9161

mascord.com | houseplans.co