

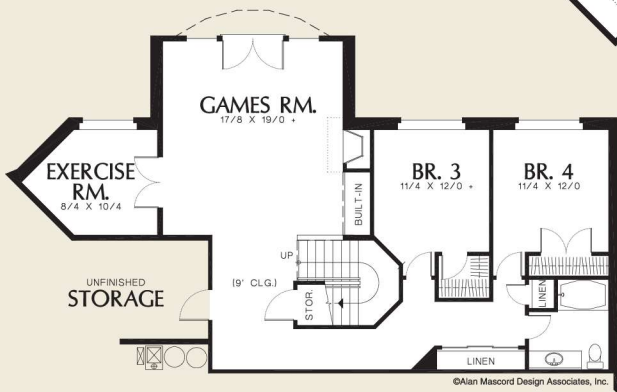


*Mascord*  
ALAN MASCORD DESIGN ASSOCIATES, INC.

The Doland  
**1308B**



©Alan Mascord Design Associates, Inc.



**Total Area** 3718 Sq. Ft  
**Bsmnt (Unfin.)** +980 Sq. Ft

**Width** 98'-8"  
**Depth** 75'-9"

**Height** (Main Flr to Peak): 21'-5"  
(to Midpt of Roof): 17'-8"

Plan Designed for Sloping Lots



ALAN MASCORD DESIGN ASSOCIATES, INC  
2187 NW Reed St, Suite 100, Portland, OR 97210 · 503.225.9161

mascord.com | houseplans.co