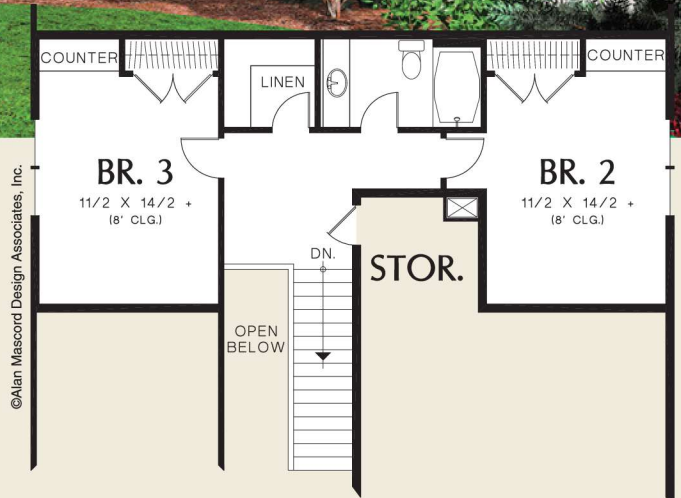
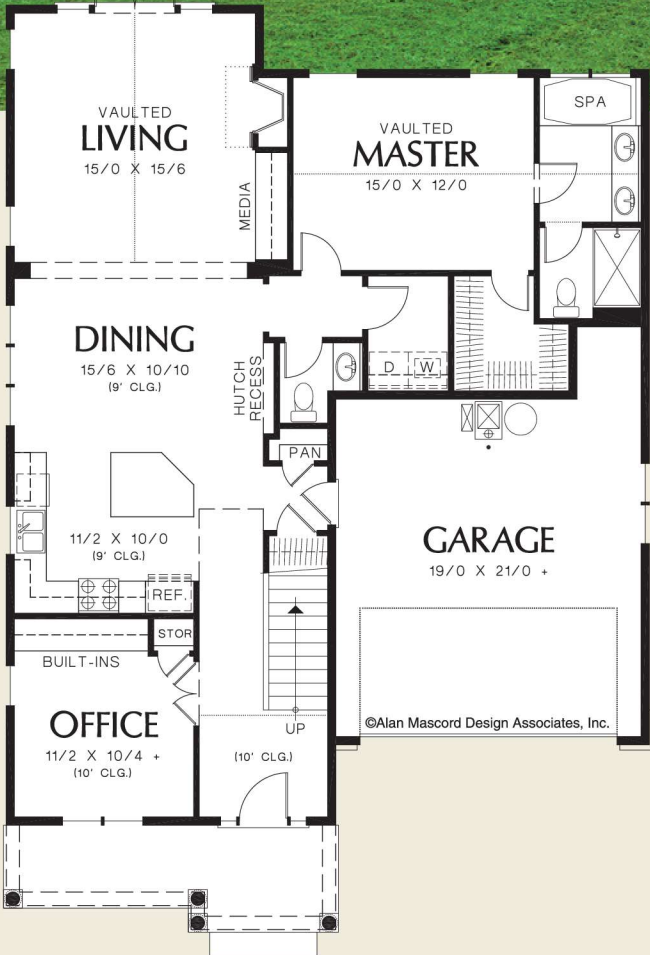




©Alan Mascord Design Associates, Inc.



Upper Floor	625 Sq. Ft
Main Floor	1407 Sq. Ft
Total Area	2032 Sq. Ft

Width	Depth
40'-0"	56'-0"

Height (Main Flr to Peak): 25'-7"



ALAN MASCORD DESIGN ASSOCIATES, INC
2187 NW Reed St, Suite 100, Portland, OR 97210 · 503.225.9161

mascord.com | houseplans.co