

Price Category
Plan 2230C
 Tacoma



Upper Floor	1101 Sq. Ft.
Main Floor	1072 Sq. Ft.
Total Area	2180 Sq. Ft.

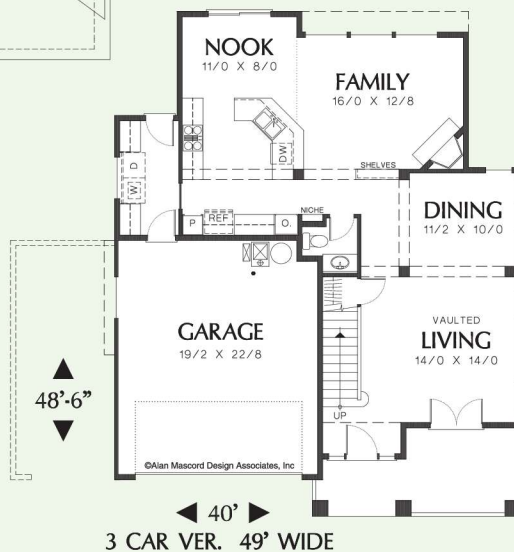
Width 40' (49')	Depth 48'6"
Height 30'	Crawlspace

FLOWING ARTS & CRAFTS STYLE

This home blends the artistry of the Craftsman era with the convenience of today's open floor plan. Greet guests at the elegant front door, topped by a light-scooping transom and flanked by sidelites. Play host to a few or many in the formal living and dining rooms, separated only by a pair of columns and a change in ceiling height. Throw open the French doors in the living room and let guests drift to the porch.

The wide-open spaces extend to the kitchen and family room, furnished with a fireplace and built-in shelves. From the sink peninsula, the cook can view the backyard or hobnob with everyone in the breakfast nook and family room.

The second floor accommodates private rooms—three bedrooms and a master suite. The master bath houses a shower, whirlpool tub, and a compartmentalized toilet. Adjacent to the suite, the den could be furnished as a private sitting area. This home plan allows for either a two- or three-car garage. With a three-car garage, bedroom three gains 90 square feet.



ALAN MASCORD DESIGN ASSOCIATES, INC.
 1305 NW 18th Ave., Portland, OR 97209 ■ 503.225.9161 ■ fax 503.225.0933
 www.mascord.com

© 1997 Alan Mascord Design Associates, Inc.
 All rights reserved.