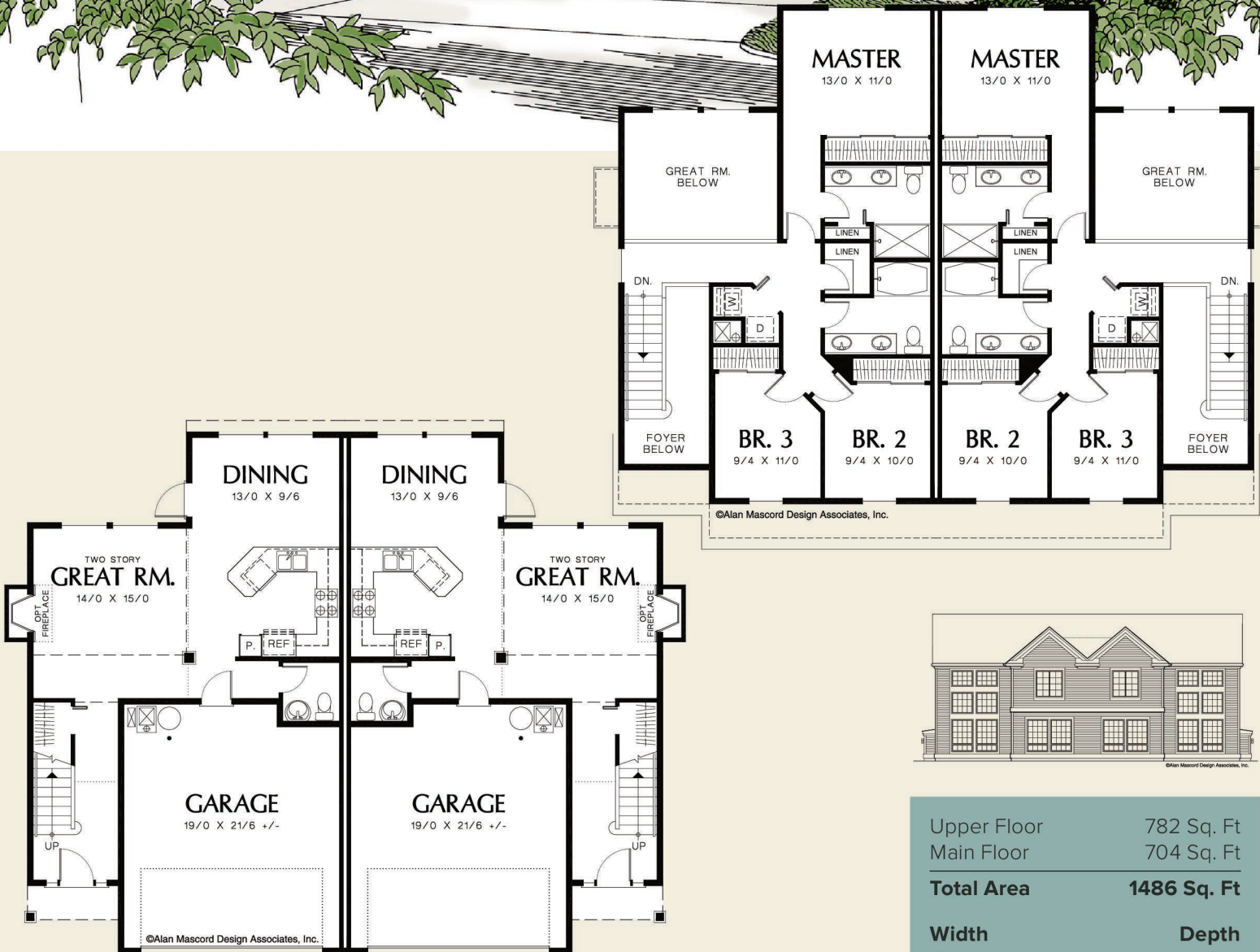




The Johnsonville
4007

Alan Mascord Design Associates, Inc.



Upper Floor	782 Sq. Ft
Main Floor	704 Sq. Ft
Total Area	1486 Sq. Ft
Width	Depth
28'-0"	47'-0"
Height (Main Flr to Peak): 25'-10"	
(to Midpt of Roof): 21'-5"	



ALAN MASCORD DESIGN ASSOCIATES, INC
2187 NW Reed St, Suite 100, Portland, OR 97210 · 503.225.9161
mascord.com | houseplans.co