

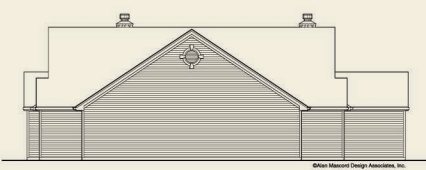
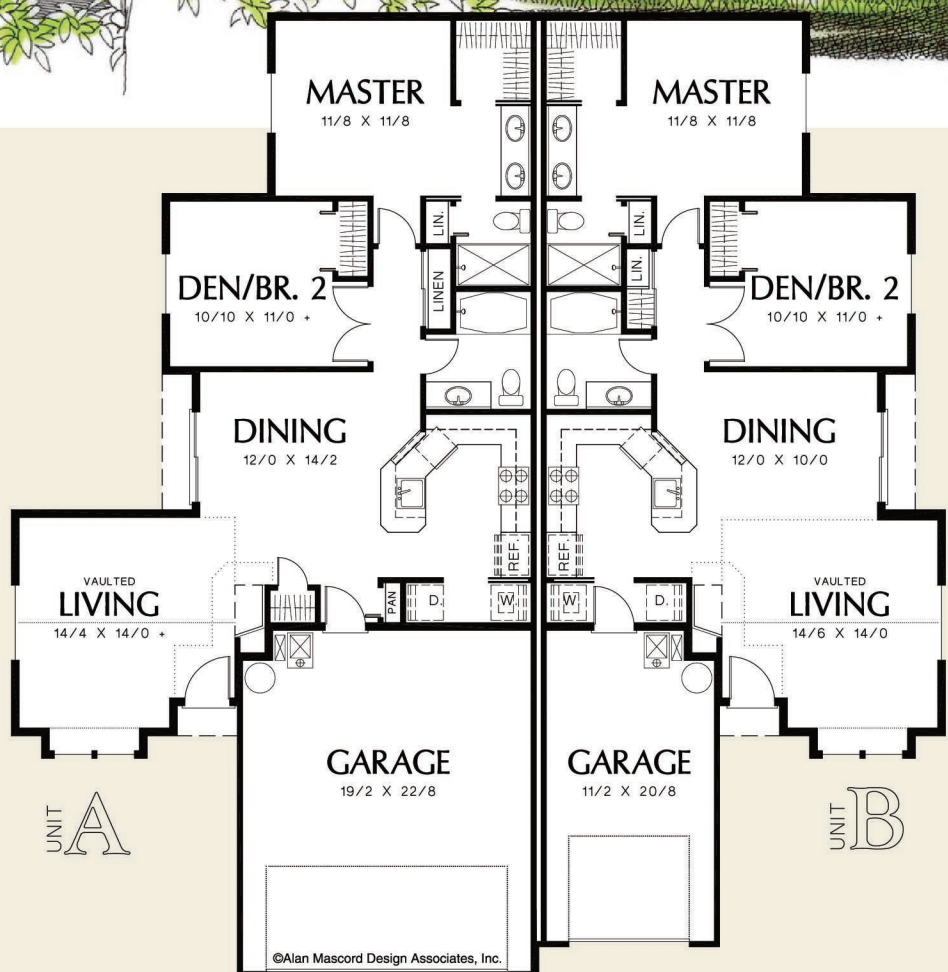


Alan Mascord
ALAN MASCORD DESIGN ASSOCIATES, INC.

The Whitespire
4031



©Alan Mascord Design Associates, Inc.



Unit A	
Total Area	1115 Sq. Ft
Unit B	
Total Area	1052 Sq. Ft
Width	Depth
62'-0"	64'-0"
Height	(Main Flr to Peak): 20'-4"
	(to Midpt of Roof): 14'-5"



ALAN MASCORD DESIGN ASSOCIATES, INC
2187 NW Reed St, Suite 100, Portland, OR 97210 · 503.225.9161
mascord.com | houseplans.co